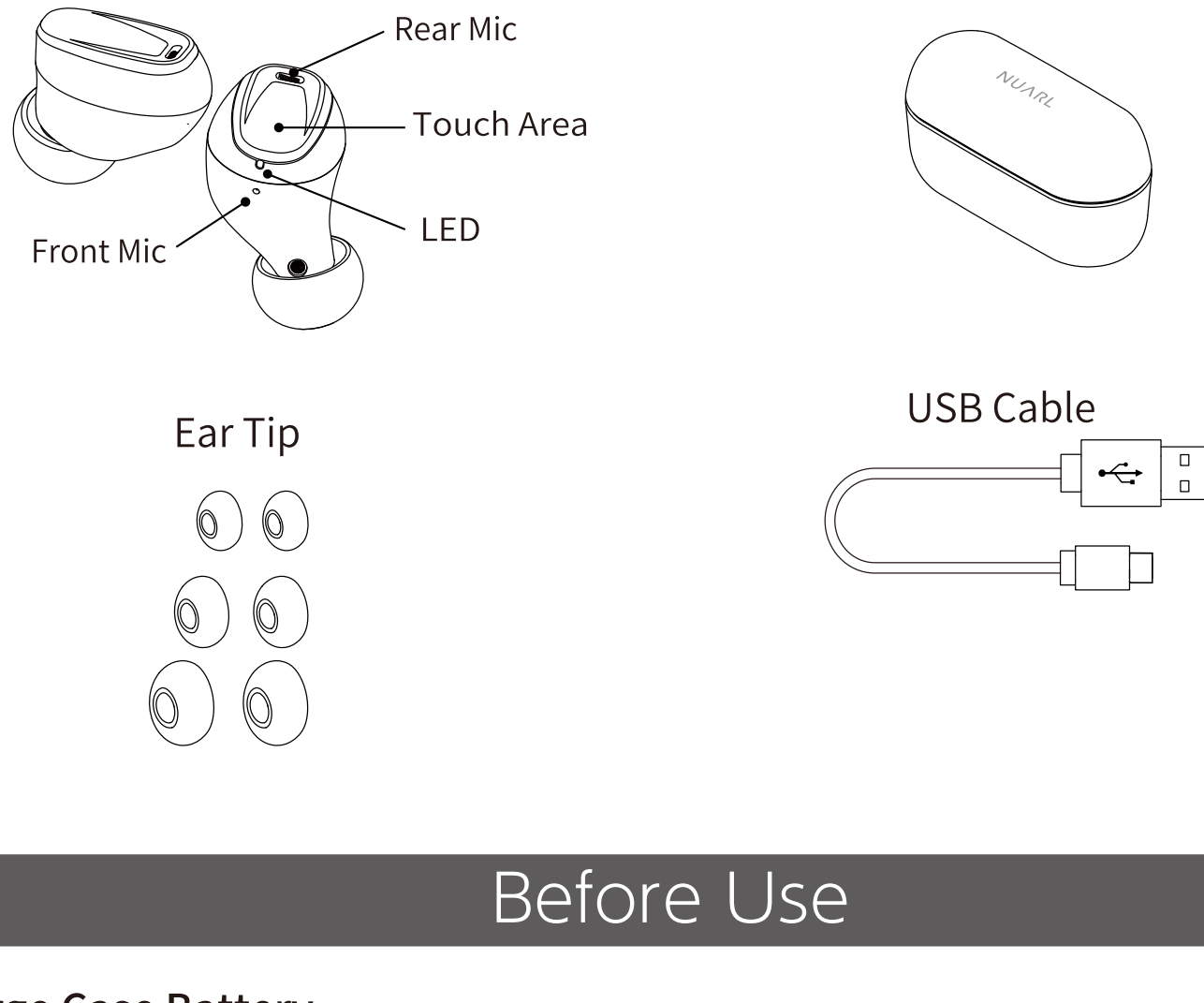


# NUARL® N6 Lite

## User Guide

### Product Diagram



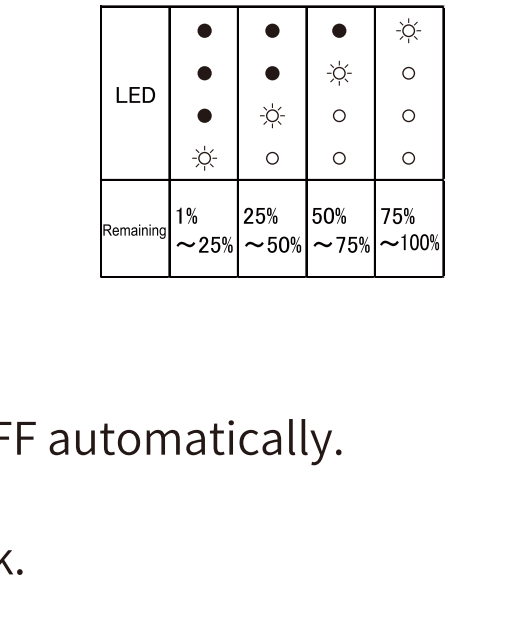
### Before Use

#### ■ Charge Case Battery

Insert USB type A connector of USB Charge Cable to USB AC charger or USB port of PC, and insert Type C USB connector to USB port of Charging Case.

Depending of battery level, the number of lit LED will change.

When put on the earphones with no charger cable connected, the LED lights up for about 3 seconds to show the battery level.



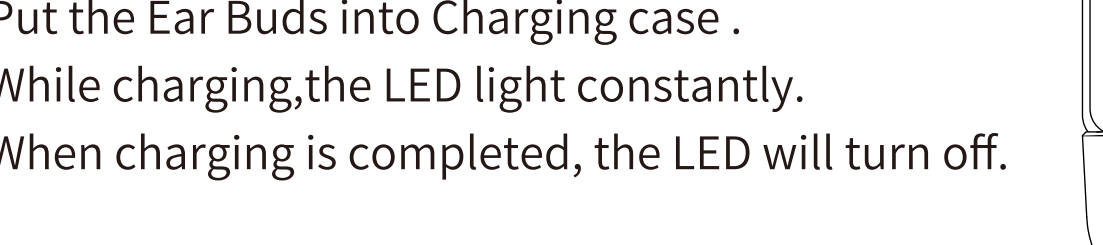
#### ■ Auto Power ON/OFF

Put the Ear Buds into Charging Case, Ear Buds power OFF automatically. When pick up the Ear buds power ON automatically.

※When Case battery is low, this function does not work.

#### ■ Remove Insulating Sheet

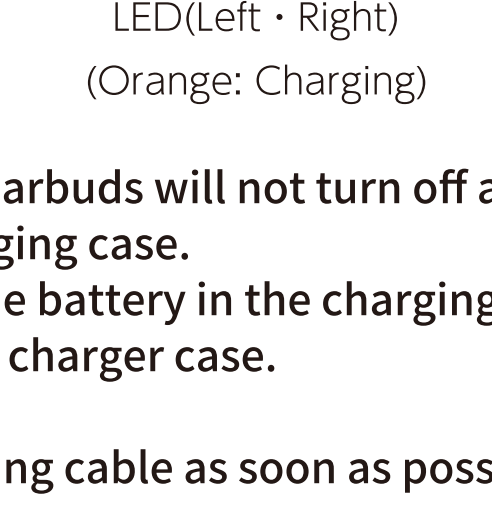
Remove Insulating sheet from back side of earbuds.



#### ■ Charge Earbuds

Put the Ear Buds into Charging case. While charging, the LED light constantly.

When charging is completed, the LED will turn off.



#### CAUTION

※If the built-in battery in the charger case is low, the Earbuds will not turn off and will not charge even if the Earbuds is attached to the charging case.

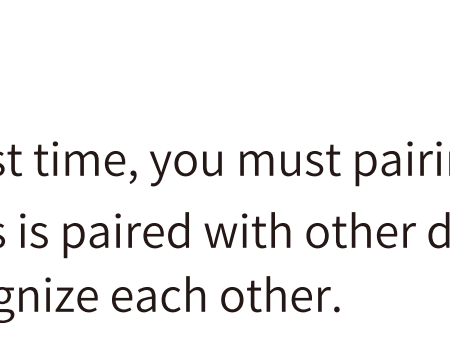
Also, please note that the Earbuds will turn on when the battery in the charging case runs out of power while the Earbuds is installed in the charging case.

※To protect the built-in battery, disconnect the charging cable as soon as possible after charging is complete.

If the product will not be used for a long period of time, recharge the battery at least once a month.

#### ■ Installation of Ear Tip

Please install and use Ear tip in the size of your choice.



### Pairing

#### ■ Pairing

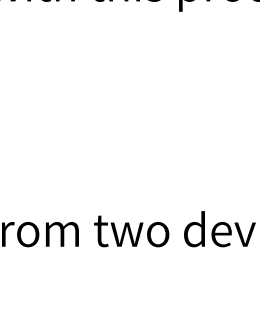
To use Ear Buds first time, you must pairing Ear Bud with mobile phone or player. Once your Ear Buds is paired with other devices, they will remain paired and automatically recognize each other.

##### 【First time to use】

1. Turn on Bluetooth function of your mobile phone.
2. Turn on the power of both earbuds.
3. Select "NUARL N6 Lite" in discovered device list of the phone.
4. Click "Pair" in the phone display.

##### 【Re-pairing or Pairing with second mobile phone】

1. Turn on Bluetooth function of your mobile phone.
2. When Earbuds is not connected to any other device, the LED indicator will blink alternately in white and orange after 6 seconds.
3. Select "NUARL N6 Lite" in discovered device list of the phone.
4. Click "Pair" in the phone display.



### Multipoint Connection

This product supports Multipoint connection, which allows you to connect to two devices simultaneously.

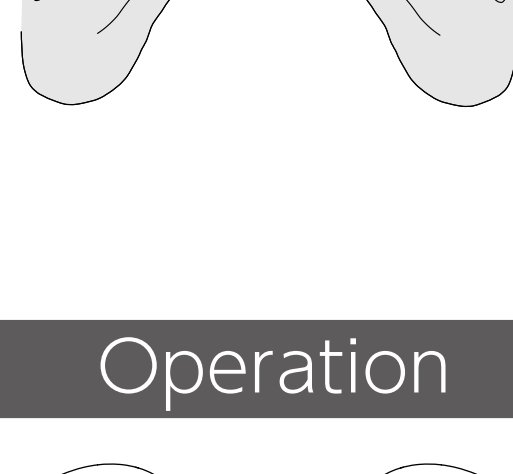
To use the Multipoint connection, the second device must be paired with this product in advance.

- Up to two devices can be connected via a Multipoint connection.
- Music can be played on either device being connected, but music from two devices cannot be played at the same time.
- If one device is playing music, operating the other device will not switch the music. Please stop playback and then operate the other device.
- It is recommended to turn off high quality audio codecs such as LDAC etc., as communication is more likely to be interrupted during Multipoint connections.
- During a Multipoint connection, the operating time is reduced due to increased power consumption.

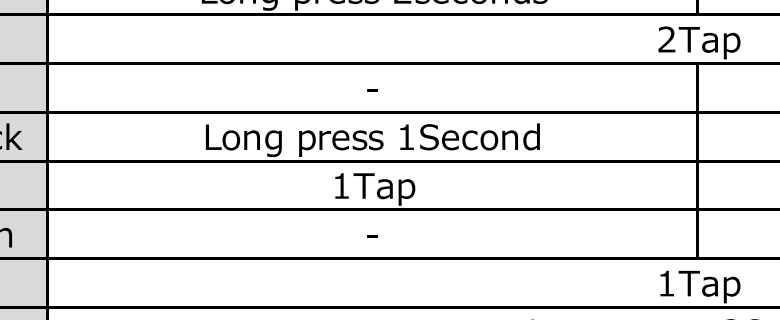
### Wearing Earbuds

Make sure that the NUARL logo is not upside down, and insert the eartip part into the ear hole.

※Ear tips must be attached for use.



### Operation



		L	R
Power	ON	Long press 2seconds	Long press 2seconds
Music	Play/Pause	2Tap	
	Next Track	-	Long press 1Second
Volume	Previous Track	Long press 1Second	-
	Volume Up	1Tap	-
Phone	Volume Down	-	1Tap
	Answer Call	1Tap	
	Hang Up	Long press 2Second	
	Reject Call	Long press 2Seconds when receiving	
ANC Mode	ON/OFF	3Tap	-
Ambient Mode	ON/OFF	-	3Tap
Gaming Mode	ON/OFF	Long Press 2Sec without Music play	-
Siri/GA	Start	-	Long Press 2Sec without Music play
Reset	Delete Pairing	With the device in the charging case, Press and hold both L/R until the white LED lights up, Release your hand and tap twice.	

※ For Android devices, depending on the type of device, volume operation may not be linked to the device's volume setting.

### Active Noise Canceling (ANC)

This product equipped with active noise cancellation (ANC).

This product's active noise canceling function uses microphones to capture external noise. It captures sound and digitally reduces unwanted noise.

When the wind hits the earphones with the ANC mode enabled, a wind noise can be heard. This is not a product defect.

### Ambient Mode

This product is equipped with an Ambient mode that allows you to listen to ambient sounds from the microphone.

When the wind hits the earphones with the Ambient mode enabled, a wind noise can be heard. This is not a product defect.

### Gaming Mode

By enabling the gaming mode, you can reduce the audio delay in relation to the video.

However, sound quality and Bluetooth stability may be degraded while in the gaming mode.

### Frequently Asked Questions

Q) Suddenly I heard no sound from one earbud.

A) Please turn off earbud and turn on it again.

Q) Bluetooth connection has dropped.

A) Please delete 「NUARL N6 Lite」 from Bluetooth device list and pairing with your device again.

Q) The pairing between L and R earbud has dropped.

A) Turn off both earbuds and turn on them again.

A) Please try to "Reset" pairing as "Operation" section.

Q) When I place the earbud in the case, it won't turn off itself.

A) When I get the earbud out from the case it won't turn on.

A) While the case's power is low, the automatic on/off function will not be active. Please turn on/off it manually.

Q) The case has run out of charges.

A) The case will discharge itself, please recharge the case regularly.

Q) I want to know about warranty and repair in outside of Japan.

A) The warranty is only valid in the country in which the product was purchased. Please contact purchased store directly for the specific repair of the goods.

### Specification

Specification	
Driver	φ6mm Dynamic
Frequency Response	20~20,000Hz
Battery	Ear buds: 3.7V/50mAh Li-Po Battery Charger Case: 3.7v/400mAh Lo-Po Battery
Continuous Play Time (ANC ON)	7hours (AAC), 5.5hours(LDAC)
Continuous Play Time (ANC OFF)	5hours (AAC), 4hours(LDAC)
Charging Time	1.5hours
Bluetooth Specification	Version5.4/Class2/MultiPairing(4)/Multi Point(2)
Audio CODEC	LDAC, AAC, SBC
Bluetooth Profile	A2DP, HFP, HSP, AVRCP
Microphone	Talk x1, Talk/ ANC/Ambient x 1
Waterproof Level	IPX4
Operation Temperature	5~50°C
Accessories	Charger Case, Charging Cable, Block Ear+ 4 Ear Tip (S/M/L), Quick Guide
Certification	R 210-238652/PSE/SRRC

※Specifications are current at the time of development and subject to change without notice.