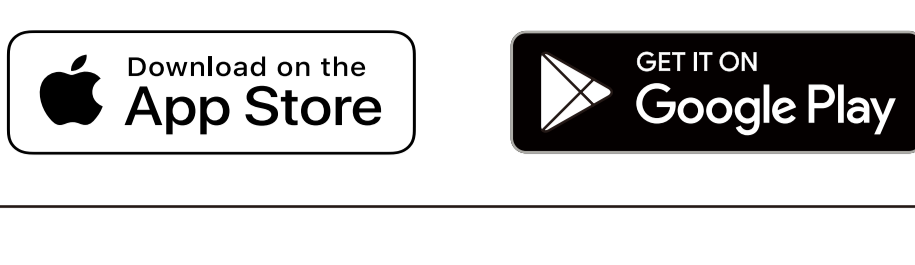


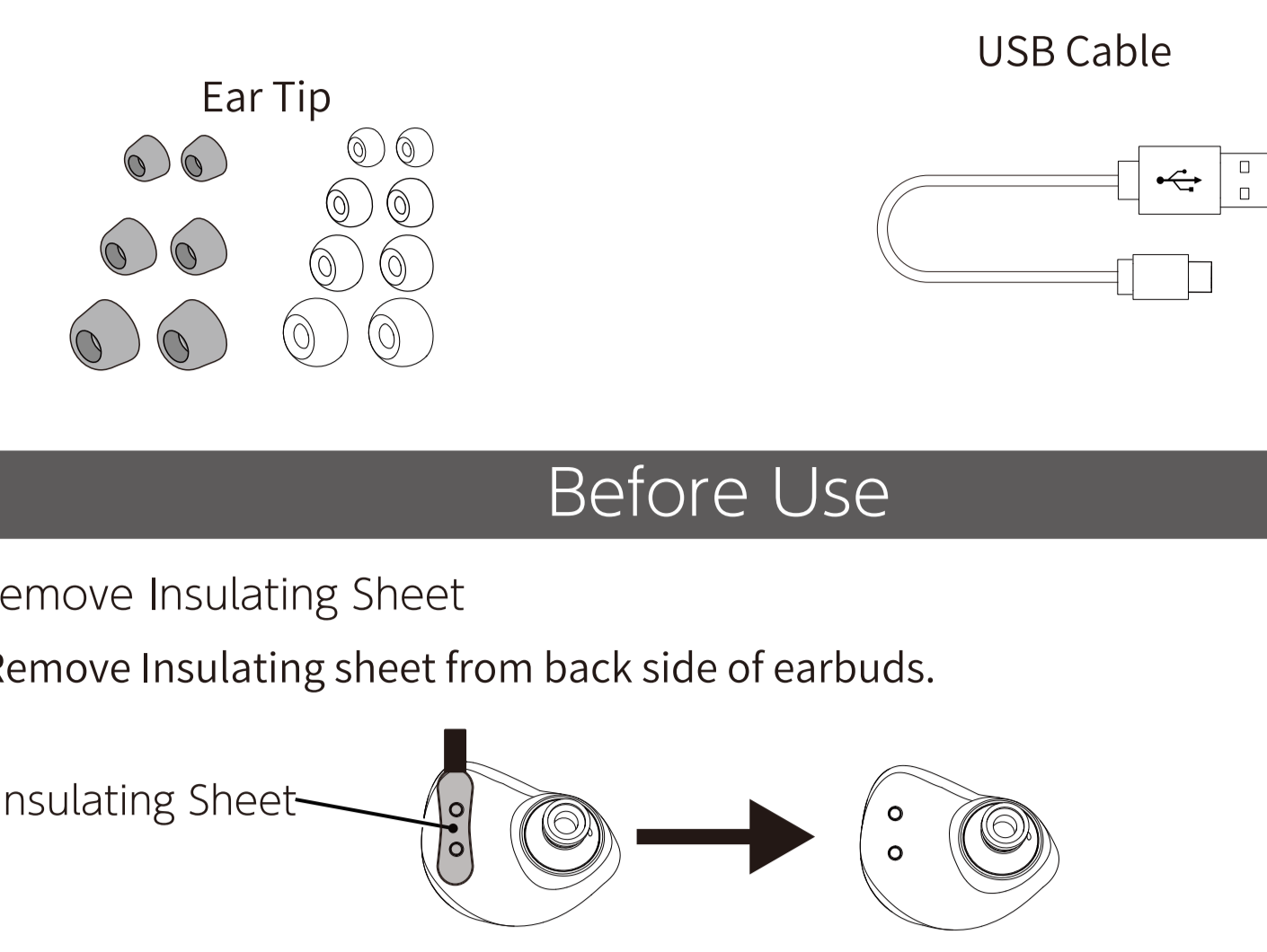
NUARL® Inovator

User Guide

Find and download the "NUARLdo" app.



Product Diagram



Before Use

Remove Insulating Sheet

Remove Insulating sheet from back side of earbuds.

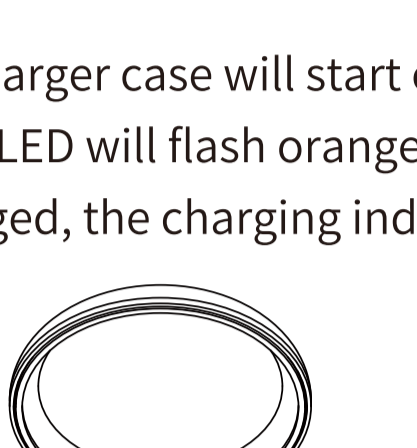
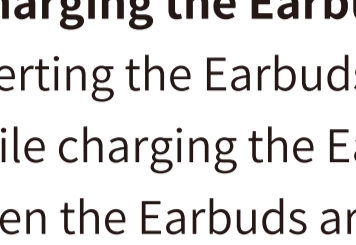


Battery Charge

【Charging the Charger Case】

Connect the Type C USB connector of the charging cable to the USB port on the side of the charger case, and connect the USB(A) connector to the USB charging adapter to start charging the charger case.

The charge LED lights up during charging.



| Level | LED |
|---------|-----------------|
| ~20% | Blinking Orange |
| 20%~99% | Blinking White |
| Full | Green |

Caution

※If the built-in battery in the charger case is low, the Earbuds will not turn off and will not charge even if the Earbuds is attached to the charging case. Also, please note that the Earbuds will turn on when the battery in the charging case runs out of power while the Earbuds is installed in the charger case.

※To protect the built-in battery, disconnect the charging cable as soon as possible after charging is complete. If the product will not be used for a long period of time, recharge the battery at least once a month.

【Charging the Earbuds】

Inserting the Earbuds into the charger case will start charging the Earbuds.

While charging the Earbuds, the LED will flash orange.

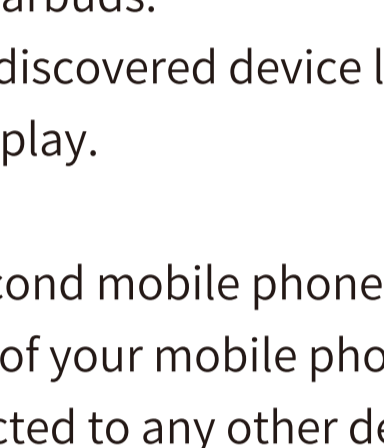
When the Earbuds are fully charged, the charging indicator will turn off.



LED(L・R)
(Flash Orange during charging)

Installation of Ear Tip

Please install and use Ear tip in the size of your choice.



Caution

Be sure to install the Ear Tip before use.

Pairing

Pairing

To use Ear Buds first time, you must pairing Ear Bud with mobile phone or player.

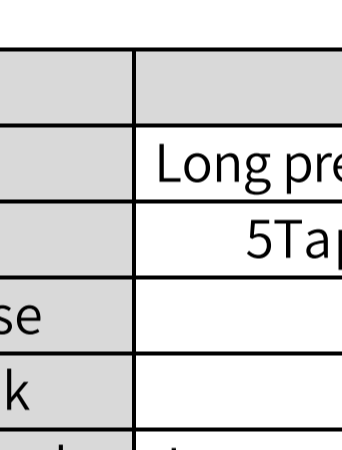
Once your Ear Buds is paired with other devices, they will remain paired and automatically recognize each other.

【First time to use】

1. Turn on Bluetooth function of your mobile phone.
2. Turn on the power of both earbuds.
3. Select "NUARL Inovator" in discovered device list of the phone.
4. Click "Pair" in the phone display.

【Re-pairing or Pairing with second mobile phone】

1. Turn on Bluetooth function of your mobile phone.
2. When Earbuds is not connected to any other device, the LED indicator will blink alternately in white and orange after 6 seconds.
3. Select "NUARL Inovator" in discovered device list of the phone.
4. Click "Pair" in the phone display.



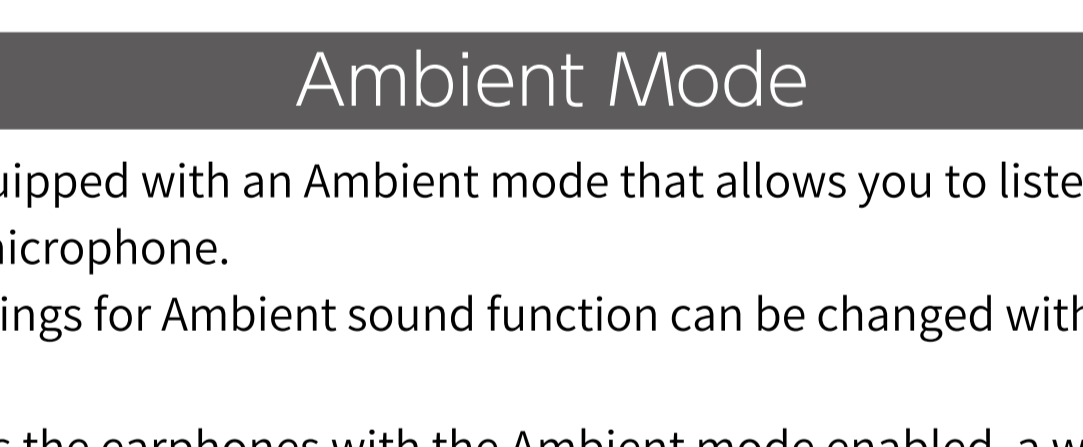
Multipoint Connection

This product supports Multipoint connection, which allows you to connect to two devices simultaneously.

To use the Multipoint connection, the second device must be paired with this product in advance.

- Up to two devices can be connected via a multipoint connection.
- Music can be played on either device being connected, but music from two devices cannot be played at the same time.
- If one device is playing music, operating the other device will not switch the music. Please stop playback and then operate the other device.
- It is recommended to turn off high quality audio codecs such as LDAC, etc., as communication is more likely to be interrupted during multipoint connections.
- When reconnecting, only one device will be reconnected automatically; to connect the other device, connect it manually from the Bluetooth setting on the device side.
- During a multipoint connection, the operating time is reduced due to increased power consumption.

Operation



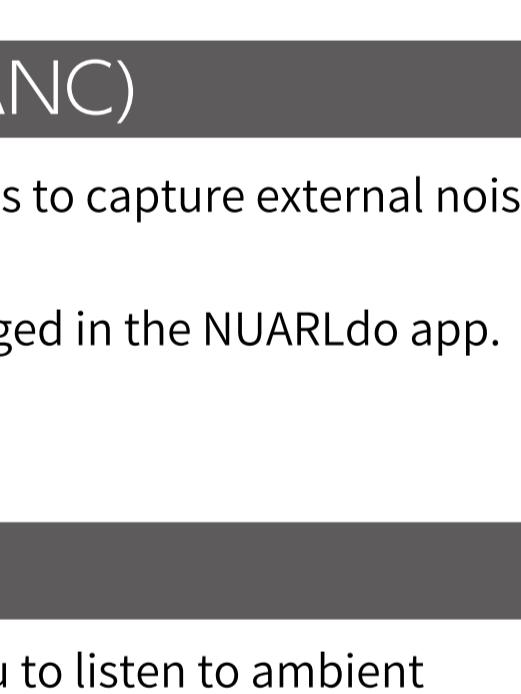
| | | L | R |
|--------------|----------------|------------------------------------|---------------------|
| Power | ON | Long press 2Seconds | Long press 2Seconds |
| | OFF | 5Tap without Bluetooth connection | |
| Music | Play/Pause | 2Tap | |
| | Next Track | - | Long press 2Second |
| | Previous Track | Long press 2Second | - |
| Volume | Volume Up | 1Tap | - |
| | Volume Down | - | 1Tap |
| Phone | Answer Call | 1Tap | |
| | Hang Up | Long press 2Second | |
| | Reject Call | Long press 2Seconds when receiving | |
| Ambient Mode | ON/OFF | 3Tap | - |
| Ambient Mode | ON/OFF | - | 3Tap |

※ Button operation may not work for some App.

※ For Android devices, depending on the type of device, volume operation may not be linked to the device's volume setting.

Charger case button operation

| | |
|-------------------------------|-----------------------|
| Forced pairing mode | 2 Click |
| Delete Pairing (Reset) | Long press 10 Seconds |
| Check remaining battery level | 1 Click |



Active Noise Canceling (ANC)

This product's active noise canceling function uses microphones to capture external noise. It captures sound and digitally reduces unwanted noise.

The effectiveness level of active noise cancellation can be changed in the NUARLdo app.

Ambient Mode

This product is equipped with an Ambient mode that allows you to listen to ambient sounds from the microphone.

The operation settings for Ambient sound function can be changed with the NUARL do app.

When the wind hits the earphones with the Ambient mode enabled, a wind noise can be heard. This is not a product defect.

Gaming Mode

By enabling the gaming mode, you can reduce the audio delay in relation to the video.

However, sound quality and Bluetooth stability may be degraded while in the gaming mode. Also, it is invalid while connected to LDAC.

Audiodo Personal Sound

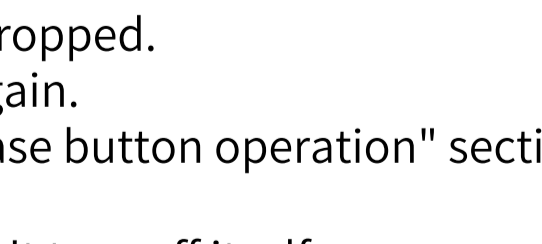
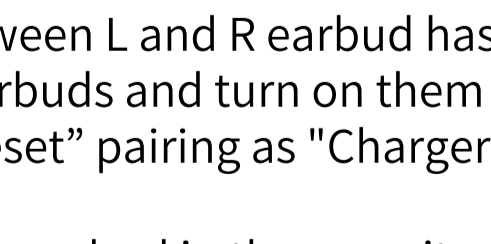
Audiodo Personal Sound uses a unique hearing correction algorithm that incorporates psychoacoustics to optimize sound quality according to individual hearing characteristics.



NUARLdo App

The NUARLdo app (free of charge) allows you to get the most out of this product. You can customize various features, update the firmware and more.

Download the app by searching for "NUARLdo" in the Apple App store or Google Play store.



NUARLdo Main Features

- Adjust the ANC effect level
- Adjust the Ambient Sound effect level
- Audiodo Personal Sound
- Equalizer setting
- Safe Listening
- Operation setting
- Volume level setting
- Voice prompt setting
- Multipoint connection setting
- LDAC setting
- LE-Audio setting
- Firmware update

LE-Audio

Regarding LE-Audio, operation may become unstable depending on the model of smartphone connected, so operation is not guaranteed.

If it does not work properly, please disable LE-Audio.

Frequently Asked Questions

Q) Suddenly I heard no sound from one earbud.

A) Please turn off earbud and turn on it again.

Q) Bluetooth connection has dropped.

A) Please delete 「NUARL Inovator」 from Bluetooth device list and pairing with your device again.

Q) The pairing between L and R earbud has dropped.

A) Turn off both earbuds and turn on them again.

A) Please try to "Reset" pairing as "Charger case button operation" section.

Q) When I place the earbud in the case, it won't turn off itself.

A) While I get the earbud out from the case it won't turn on.

A) When the case's battery is low, the automatic on/off function will not be active. Please turn on/off it manually.

Q) The case has run out of charges.

A) The case will discharge itself, please recharge the case regularly.

Q) I want to know about warranty and repair in outside of Japan.

A) The warranty is only valid in the country in which the product was purchased. Please contact purchased store directly for the specific repair of the goods.

Specification

| | |
|-------------------------|---|
| Dimensions | W25.4 x H19.6 x D27.3mm(Earbud alone) D60 x 34mm (Charger Case) |
| Weight | 6.7g(Earbud alone) 66.8g (Charger case) |
| Driver | φ8mm LCP Dynamic "NUARL DRIVER"[N8]v4 x1 xMEMS "Cowell" MEMS x1 |
| Microphone | 3 (Talkx2 (FF ANC/Ambient) , FB ANC x1) |
| Battery | 3.7V/40mA Li-Po battery 3.7V/400mA Li-Po battery |
| Charging Time | 2 Hours (Earbuds) 1.5 Hours (Charger Case) |
| Playback Time | 6 Hours (ANC OFF/AAC/50% Volume) 18 Hours (With Charger Case) |
| Bluetooth Specification | Bluetooth 5.3/Class1/Multi Pairing(4)/Multipoint (2) |
| Bluetooth Profile | A2DP/AVRCP/HFP/SPP |
| Audio CODEC | SBC/AAC/aptX/aptX Adaptive/aptX Lossless/LDAC/LC-3 |
| Accessories | Charger case、USB Cable Magic Ear+7 Urethane FoamEar tip(S/M/L) Block Ear+6n Silicone Ear tip (S/MS/M/L) User Guide |

※Specifications are current at the time of development and subject to change without notice.